



16-17 Explorer 2.3 Catch Can PLUG N PLAY™

The UPR Catch Can Installation Steps:

1. Remove factory engine cover and unsnap vacuum line from intake. (Unplug connector from MAP sensor by pressing clip on plug then gently pulling off)
2. Next loosen the upper clamp on the throttle body coupler to free up the intake manifold and removing the bolts holding the intake to the cylinder head.
3. Now you can get behind the intake and unsnap the electrical connectors on both sides of the throttle body. Unplug the throttle body plug by sliding the red clip open and pushing on the connector while gently pulling it off.
4. Unsnap and slide the locking clip off the factory push button vacuum connector on the left side of the throttle body. Push white button in and gently remove vacuum connector.
(Reach behind the intake and squeeze the connector holding the PCV line to remove)
5. You will use a lighter to heat the plastic hose just enough to pull the ends out without damaging the hose or the PCV connectors. (It does not take much heat to remove)
6. Lift the manifold out to access the PCV line and remove. Using a **screwdriver** pry the retaining ring off the retaining clip on both sides to remove PCV.
(Slide retaining ring over PCV then install new line and reinstall PCV retaining ring)
7. Mount the UPR Plug n Play™ Catch Can off the engine side of the battery hold down.
8. Run the lines to the PCV and intake connection location the same as factory right under the intake tube from the UPR Plug n Play™ Catch Can.
9. Once the PCV and Intake connections are in place you can reconnect all the electrical connectors and vacuum line. Be sure to line up and get the throttle body in it's coupler before install the mounting bolts. (Start with the center bolt and then left to right)
10. Install vacuum line into clips in from and double check your work is buttoned up properly for you to fire it up. (You're now protected by a UPR Plug n Play™ Catch Can System)

We recommend checking your system weekly and cleaning your can every six months to get the best performance. It's best to drain your system right while everything is hot for the best results.

Be sure to shop our online store for the best deals: www.uprproducts.com

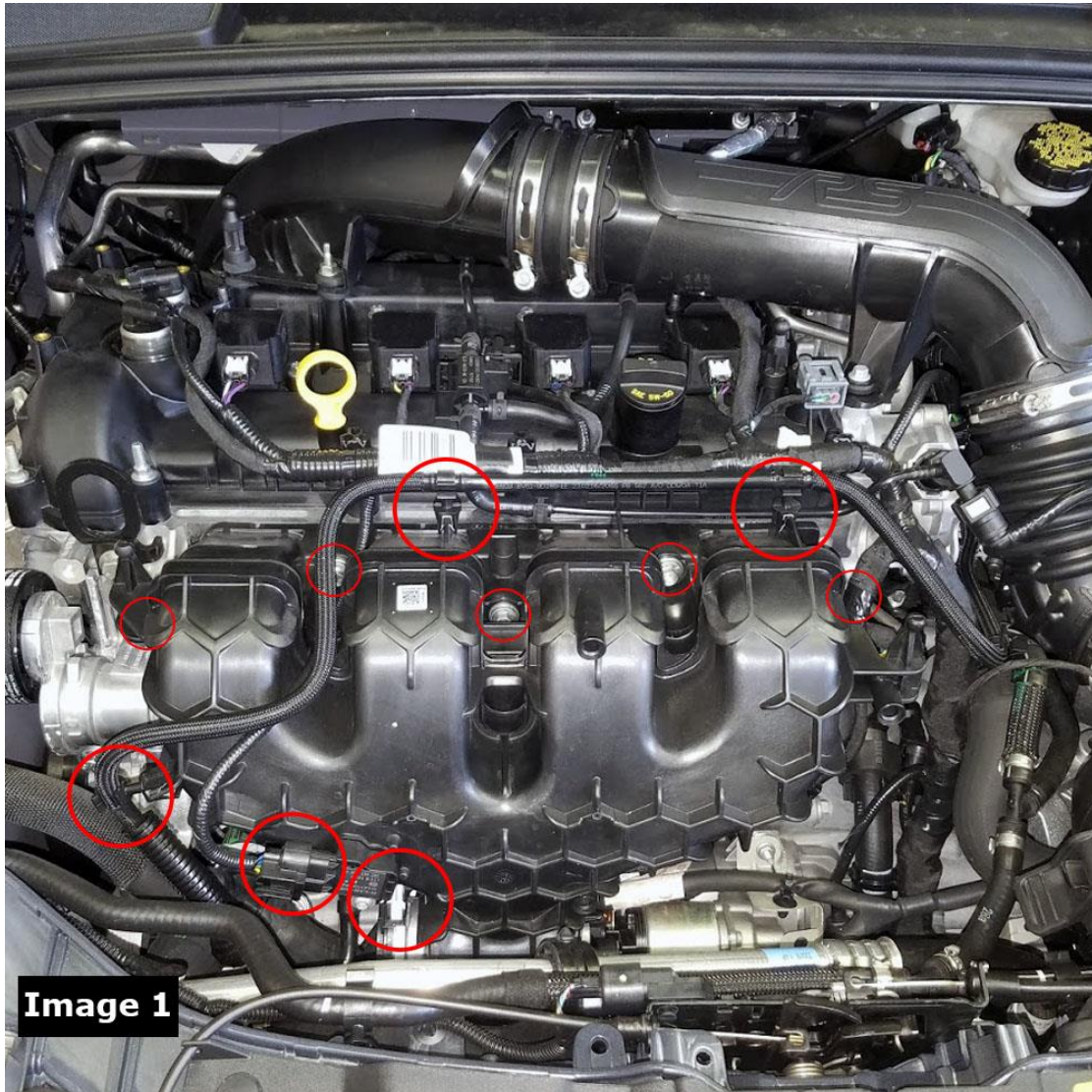
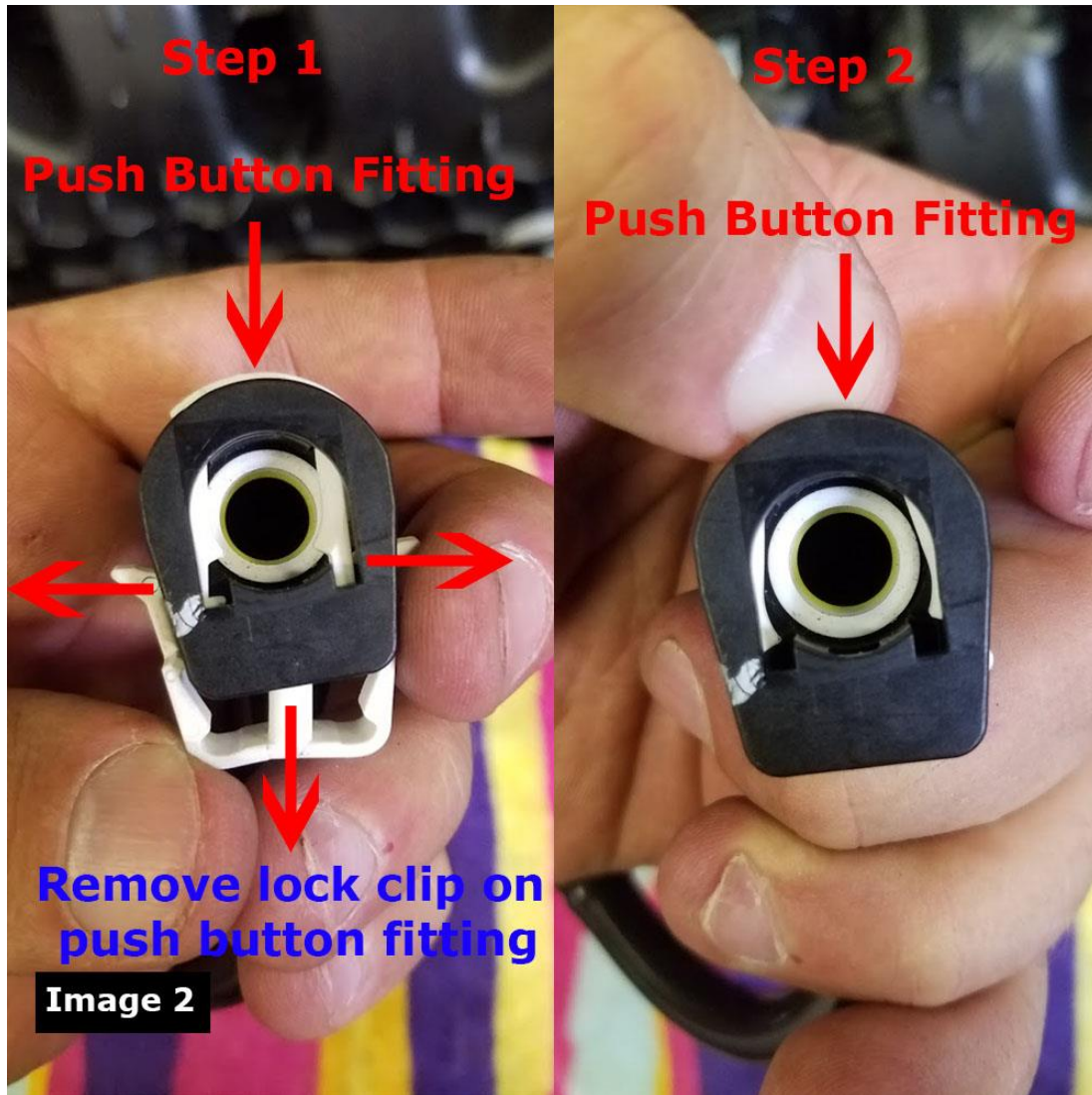


Image 1

Be sure to shop our online store for the best deals: www.uprproducts.com



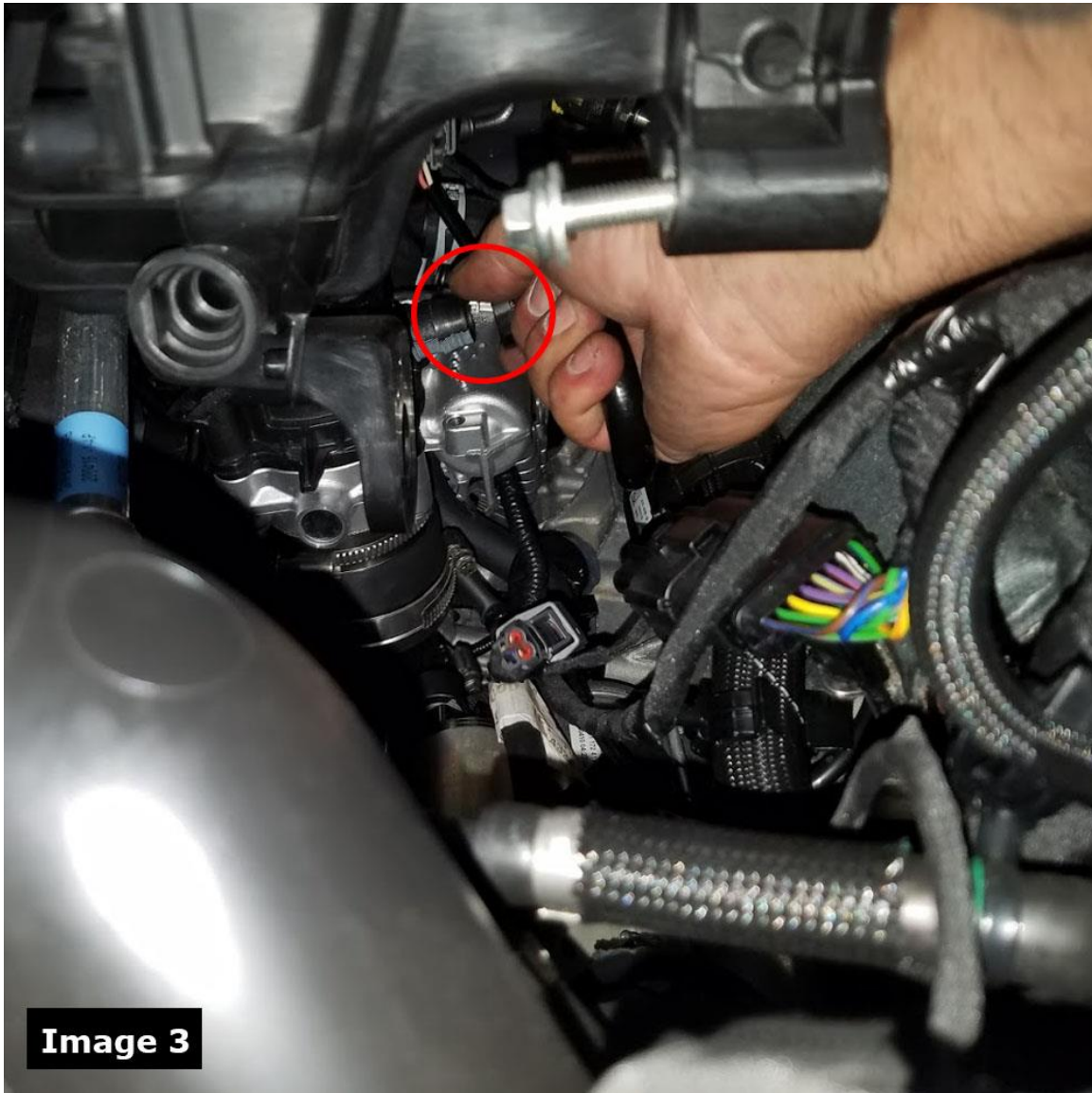
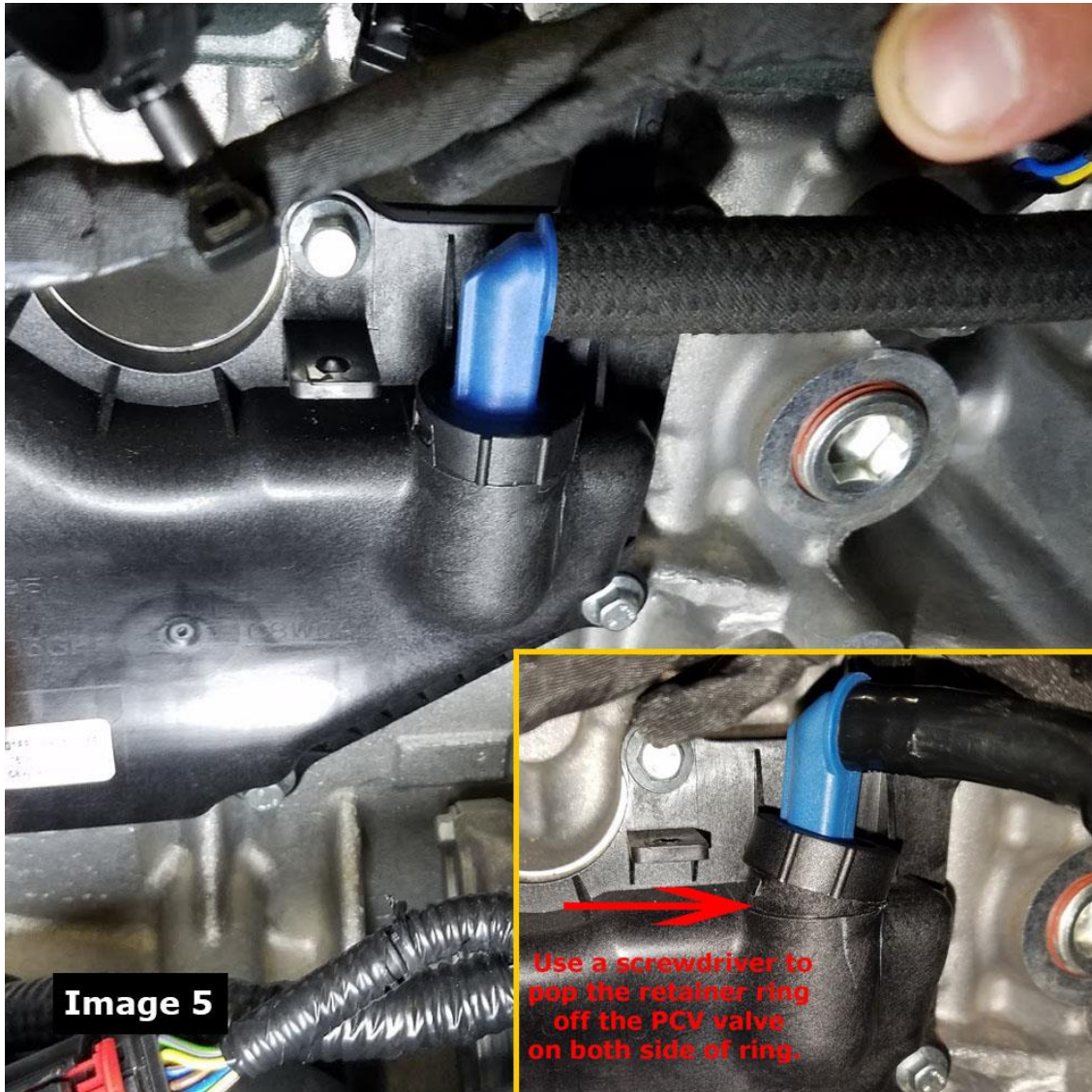


Image 3







Be sure to shop our online store for the best deals: www.uprproducts.com



NEVER RETURN OIL FROM THE CATCH CAN BACK INTO THE ENGINE

Nothing is easier or more straight forward than a
UPR Plug n Play™ Catch Can System!
UPR Consistently Delivers the Best Performance.

Be sure to shop our online store for the best deals: www.uprproducts.com